

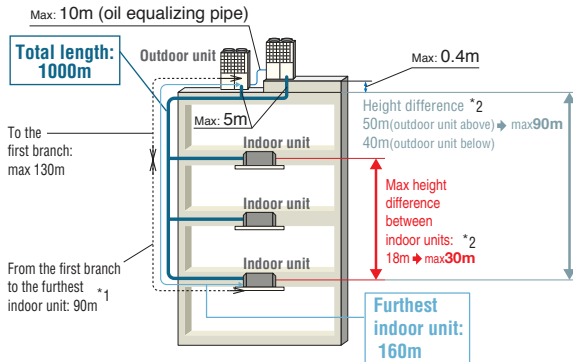


# KXZ2 Cooling only series

## 10 ~ 60HP (28.0kW~168.0kW)

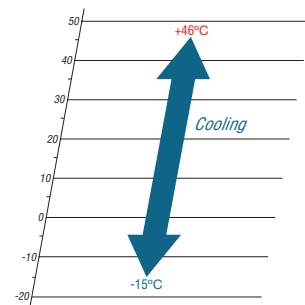
Model No.	Nominal Cooling Capacity	Model No.	Nominal Cooling Capacity	Model No.	Nominal Cooling Capacity
FDC280CKXZA2	28.0kW	FDC615CKXZA2	61.5kW	FDC1120CKXZA2	112.0kW
FDC335CKXZA2	33.5kW	FDC670CKXZA2	67.0kW	FDC1200CKXZA2	120.0kW
FDC400CKXZA2	40.0kW	FDC735CKXZA2	73.5kW	FDC1250CKXZA2	125.0kW
FDC450CKXZA2	45.0kW	FDC800CKXZA2	80.0kW	FDC1300CKXZA2	130.0kW
FDC475CKXZA2	47.5kW	FDC850CKXZA2	85.0kW	FDC1350CKXZA2	135.0kW
FDC500CKXZA2	50.0kW	FDC900CKXZA2	90.0kW	FDC1425CKXZA2	142.5kW
FDC560CKXZA2	56.0kW	FDC950CKXZA2	95.0kW	FDC1450CKXZA2	145.0kW
		FDC1000CKXZA2	100.0kW	FDC1500CKXZA2	150.0kW
		FDC1060CKXZA2	106.0kW	FDC1560CKXZA2	156.0kW
				FDC1620CKXZA2	162.0kW
				FDC1680CKXZA2	168.0kW

- The new KXZ2 series has a layered design and a refined new form.
- Connect up to 80 indoor units/up to 130% capacity.
- High efficiency with EER up to 3.86.
- Industry leading total piping length up to 1000m and a maximum pipe run of 160m.



\*1 The difference between the longest and the shortest indoor unit piping from the first branch must be within 40m. (MAX85m)  
 \*2 It is necessary to change the setting corresponding to each height difference in installation. The range of use is also different.

Range of operation



# Specifications

Item	Model		FDC280CKXZA2	FDC335CKXZA2
Nominal horse power			10HP	12HP
Power source			3 Phase 380-415V, 50Hz	
Starting current	A		5	
Max current	A		20.1	
Nominal capacity	Cooling	kW	28.0	33.5
Electrical characteristics	Power consumption	Cooling	kW	7.25
	Cooling			
Exterior dimensions	HxWxD	mm	1697x1350x720	
Net weight			284	
Sound pressure level	Cooling	dB(A)	56	63
Refrigerant	Type / GWP	R410A / 2088		
	Charge	kg/TCO2Eq	11.0 / 22.968	
Refrigerant piping size	Liquid line	mm(in)	ø9.52(3/8")	ø12.7(1/2")
	Gas line		ø22.22(7/8")	ø25.4(1") [ø22.22(7/8")]
Capacity connection			50~130	
Number of connectable indoor units			24	29

Item	Model		FDC400CKXZA2	FDC450CKXZA2	FDC475CKXZA2	FDC500CKXZA2	FDC560CKXZA2
Nominal horse power			14HP	16HP	17HP	18HP	20HP
Power source			3 Phase 380-415V, 50Hz				
Starting current	A		5		8		
Max current	A		32.0		40.2		
Nominal capacity	Cooling	kW	40.0	45.0	47.5	50.0	56.0
Electrical characteristics	Power consumption	Cooling	kW	10.98	13.98	13.97	14.01
	Cooling						
Exterior dimensions	HxWxD	mm	2052x1350x720				
Net weight			328		374		
Sound pressure level	Cooling	dB(A)	60	61	61	61	63
Refrigerant	Type / GWP	R410A / 2088					
	Charge	kg/TCO2Eq	11.5 / 24.012				
Refrigerant piping size	Liquid line	mm(in)	ø12.7(1/2")				
	Gas line		ø25.4(1") [ø28.58(1 1/8")]	ø28.58(1 1/8")			
Capacity connection			50~130				
Number of connectable indoor units			34	39	41	43	48

Item	Model		FDC615CKXZA2	FDC670CKXZA2	FDC735CKXZA2	FDC800CKXZA2	FDC850CKXZA2
Combination (FDC)			280CKXZA2	335CKXZA2	335CKXZA2	400CKXZA2	400CKXZA2
			335CKXZA2	335CKXZA2	400CKXZA2	400CKXZA2	450CKXZA2
Nominal horse power			22HP	24HP	26HP	28HP	30HP
Power source			3 Phase 380-415V, 50Hz				
Starting current	A		10				
Max current	A		40.2		52.1	64.0	
Nominal capacity	Cooling	kW	61.5	67.0	73.5	80.0	85.0
Electrical characteristics	Power consumption	Cooling	kW	16.24	17.96	19.96	21.96
	Cooling						
Exterior dimensions	HxWxD	mm	1697x2700x720			2052x2700x720	
Net weight			567		611		
Refrigerant charge	R410A	kg	11.0x2		11.0+11.5		
Refrigerant piping size	Liquid line	mm(in)	ø12.7(1/2")		ø15.88(5/8")		
	Gas line		ø28.58(1 1/8")		ø31.75(1 1/4") [ø34.92(1 3/8")]		
Capacity connection			50~130				
Number of connectable indoor units			53	58	63	69	73

1. The data are measured under the following conditions(SO-T1,H1). Cooling: Indoor temp. of 27°CDB, 19°CWB, and outdoor temp. of 35°CDB. Heating: Indoor temp. of 20°CDB, and outdoor temp. of 7°CDB, 6°CWB.

2. Sound pressure level indicates the value in anechoic chamber. During operation these values are somewhat higher due to ambient conditions.

3. 'tonne(s) of CO2 equivalent' means a quantity of greenhouse gases- expressed as the product of the weight of the greenhouse gases in metric tonnes and of their global warming potential.

4. [ ] : Pipe sizes applicable to European installations are shown in parentheses.

# Specifications

Item	Model	FDC900CKXZA2	FDC950CKXZA2	FDC1000CKXZA2	FDC1060CKXZA2	FDC1120CKXZA2		
Combination (FDC)		450CKXZA2	475CKXZA2	500CKXZA2	500CKXZA2	560CKXZA2		
		450CKXZA2	475CKXZA2	500CKXZA2	560CKXZA2	560CKXZA2		
Nominal horse power		32HP	34HP	36HP	38HP	40HP		
Power source		3 Phase 380-415V, 50Hz						
Starting current	A	10	16					
Max current	A	64.0	80.4					
Nominal capacity	Cooling	kW	90.0	95.0	100.0	106.0	112.0	
Electrical characteristics	Power consumption	Cooling	kW	27.95	27.94	28.02	31.51	35.00
Exterior dimensions	HxWxD	mm	2052x2700x720					
Net weight		kg	655	747				
Refrigerant charge	R410A	kg	11.5x2					
Refrigerant piping size	Liquid line	mm(in)	ø15.88(5/8")			ø19.05(3/4")		
	Gas line		ø31.75(1 1/4") [ø34.92(1 3/8")]			ø38.1(1 1/2") [ø34.92(1 3/8")]		
Capacity connection		%	50~130					
Number of connectable indoor units			78	80				

Item	Model	FDC1200CKXZA2	FDC1250CKXZA2	FDC1300CKXZA2	FDC1350CKXZA2	FDC1425CKXZA2		
Combination (FDC)		400CKXZA2	400CKXZA2	400CKXZA2	450CKXZA2	475CKXZA2		
		400CKXZA2	400CKXZA2	450CKXZA2	450CKXZA2	475CKXZA2		
		400CKXZA2	450CKXZA2	450CKXZA2	450CKXZA2	475CKXZA2		
Nominal horse power		42HP	44HP	46HP	48HP	50HP		
Power source		3 Phase 380-415V, 50Hz						
Starting current	A	15				24		
Max current	A	96.0				120.6		
Nominal capacity	Cooling	kW	120.0	125.0	130.0	135.0	142.5	
Electrical characteristics	Power consumption	Cooling	kW	32.94	35.94	38.93	41.93	41.91
Exterior dimensions	HxWxD	mm	2052x4050x720					
Net weight		kg	982			1120		
Refrigerant charge	R410A	kg	11.5x3					
Refrigerant piping size	Liquid line	mm(in)	ø19.05(3/4")					
	Gas line		ø38.1(1 1/2") [ø34.92(1 3/8")]					
Capacity connection		%	50~130					
Number of connectable indoor units			80					

Item	Model	FDC1450CKXZA2	FDC1500CKXZA2	FDC1560CKXZA2	FDC1620CKXZA2	FDC1680CKXZA2		
Combination (FDC)		475CKXZA2	500CKXZA2	500CKXZA2	500CKXZA2	560CKXZA2		
		475CKXZA2	500CKXZA2	500CKXZA2	560CKXZA2	560CKXZA2		
		500CKXZA2	500CKXZA2	560CKXZA2	560CKXZA2	560CKXZA2		
Nominal horse power		52HP	54HP	56HP	58HP	60HP		
Power source		3 Phase 380-415V, 50Hz						
Starting current	A	24						
Max current	A	120.6						
Nominal capacity	Cooling	kW	145.0	150.0	156.0	162.0	168.0	
Electrical characteristics	Power consumption	Cooling	kW	41.95	42.03	45.52	49.01	52.50
Exterior dimensions	HxWxD	mm	2052x4050x720					
Net weight		kg	1120					
Refrigerant charge	R410A	kg	11.5x3					
Refrigerant piping size	Liquid line	mm(in)	ø19.05(3/4")					
	Gas line		ø38.1(1 1/2") [ø34.92(1 3/8")]					
Capacity connection		%	50~130					
Number of connectable indoor units			80					

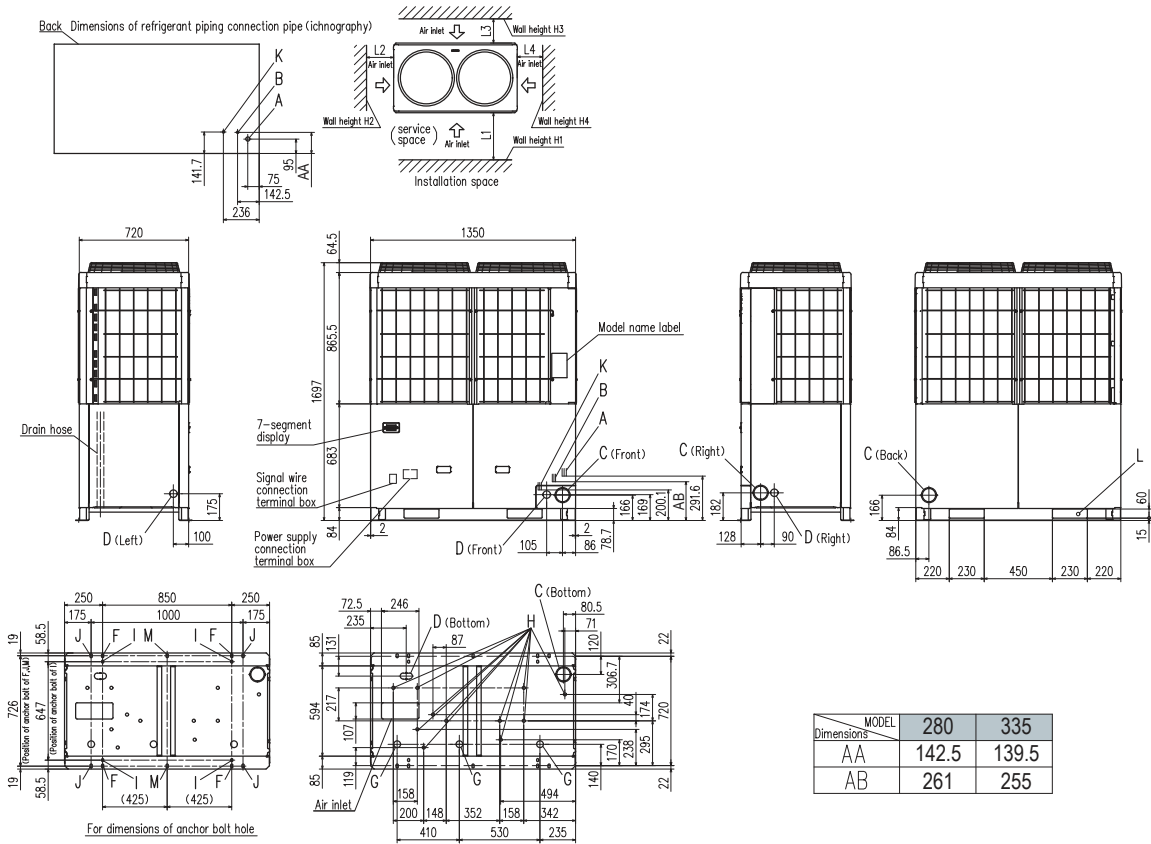
- The data are measured under the following conditions(SO-T1). Cooling: Indoor temp. of 27°CDB, 19°CWB, and outdoor temp. of 35°CDB. Heating: Indoor temp. of 20°CDB, and outdoor temp. of 7°CDB, 6°CWB.
- Sound pressure level indicates the value in an anechoic chamber. During operation these values are somewhat higher due to ambient conditions.
- [ ] : Pipe sizes applicable to European installations are shown in parentheses.

## Dimensions

Please refer to page 45, 47.

# Dimensions

All measurements in mm.

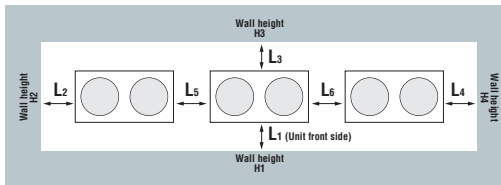


Mark	Content	280	335
A	Refrigerant gas piping connection pipe	ø22.22(Brazing)	ø25.4(Brazing)
B	Refrigerant liquid piping connection pipe	ø9.52(Flare)	ø12.7(Flare)
C	Refrigerant piping exit hole	ø88(or ø100)	
D	Power supply entry hole	ø50 (right · left · front), long hole 40 x 80 (bottom)	
F	Anchor bolt hole	M10 x 4 places	
G	Drain waste water hose hole	ø45 x 3 places	
H	Drain hole	ø20 x 11 places	
K	Refrigerant oil equalization piping connection pipe	ø9.52(Flare)	
L	Carrying in or hole for hanging	230 x 60	

Installation example		
Dimensions	1	2
L <sub>1</sub>	500	Open
L <sub>2</sub>	10(30)	10(30)
L <sub>3</sub>	100	100
L <sub>4</sub>	10(30)	Open
H <sub>1</sub>	1500	Open
H <sub>2</sub>	No limit	No limit
H <sub>3</sub>	1000	No limit
H <sub>4</sub>	No limit	Open

①: In case it is the promised installation location that the outdoor unit is used on conditions with the ambient temperature of 43°C or more.

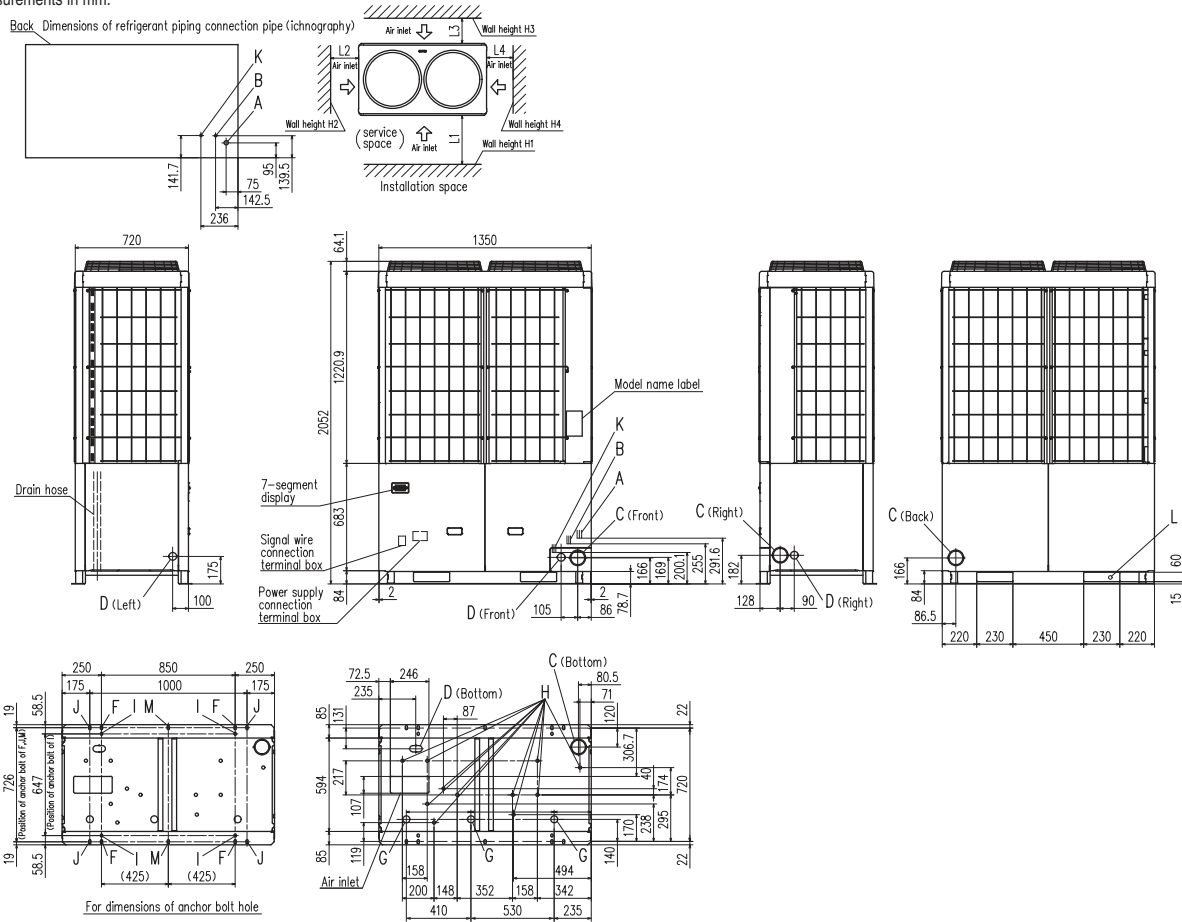
## When more than one unit is installed



Installation example		
Dimensions	1	2
L <sub>1</sub>	500	Open
L <sub>2</sub>	10(30)	200
L <sub>3</sub>	100	300
L <sub>4</sub>	10(30)	Open
L <sub>5</sub>	10(30)	400
L <sub>6</sub>	10(30)	400
H <sub>1</sub>	1500	Open
H <sub>2</sub>	No limit	No limit
H <sub>3</sub>	1000	No limit
H <sub>4</sub>	No limit	Open

# Dimensions

All measurements in mm.

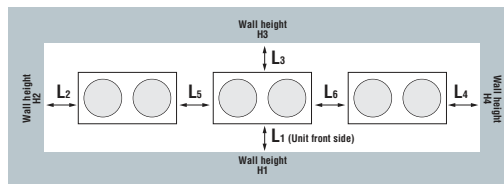


Mark	Content	400	450, 475, 500, 560
A	Refrigerant gas piping connection pipe	ø25.4(Brazing)	ø28.58(Brazing)
B	Refrigerant liquid piping connection pipe	ø12.7(Flare)	
C	Refrigerant piping exit hole	ø88(or ø100)	
D	Power supply entry hole	ø50 (right · left · front), long hole 40 x 80 (bottom)	
F	Anchor bolt hole	M10 x 4 places	
G	Drain waste water hose hole	ø45 x 3 places	
H	Drain hole	ø20 x 11 places	
K	Refrigerant oil equalization piping connection pipe	ø9.52(Flare)	
L	Carrying in or hole for hanging	230 x 60	

Installation example		
Dimensions	1	2
L <sub>1</sub>	500	Open
L <sub>2</sub>	10(30)	10(30)
L <sub>3</sub>	100	100
L <sub>4</sub>	10(30)	Open
H <sub>1</sub>	1500	Open
H <sub>2</sub>	No limit	No limit
H <sub>3</sub>	1000	No limit
H <sub>4</sub>	No limit	Open

() : In case it is the promised installation location that the outdoor unit is used on conditions with the ambient temperature of 43°C or more.

## When more than one unit is installed



Installation example		
Dimensions	1	2
L <sub>1</sub>	500	Open
L <sub>2</sub>	10(30)	200
L <sub>3</sub>	100	300
L <sub>4</sub>	10(30)	Open
L <sub>5</sub>	10(30)	400
L <sub>6</sub>	10(30)	400
H <sub>1</sub>	1500	Open
H <sub>2</sub>	No limit	No limit
H <sub>3</sub>	1000	No limit
H <sub>4</sub>	No limit	Open